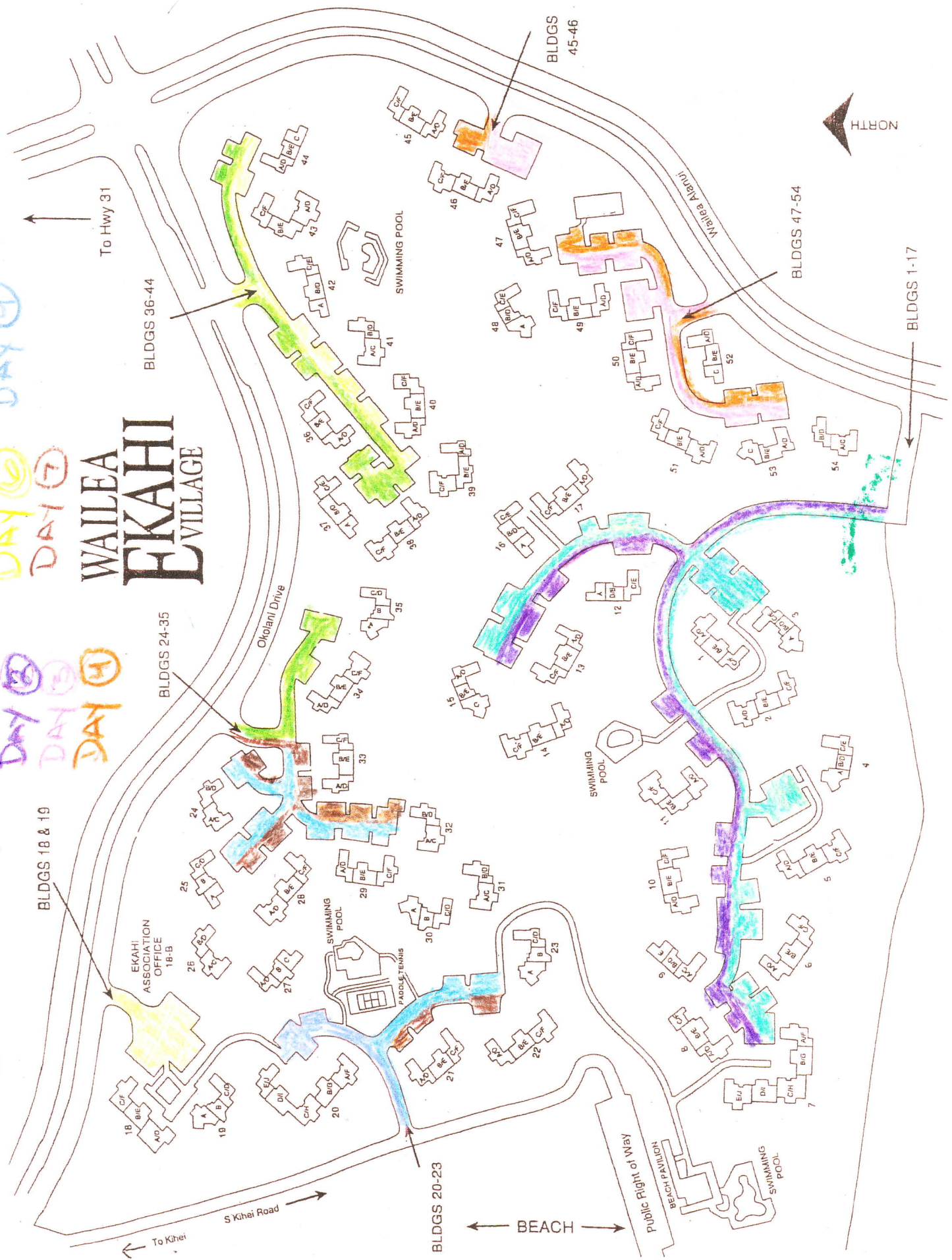


SEAL COAT

DAY 1
DAY 2
DAY 3
DAY 4
DAY 5
DAY 6
DAY 7
DAY 8
DAY 9

WALEA EKAHI VILLAGE



To Hwy 31

BLDGS 36-44

BLDGS 45-46

BLDGS 47-54

BLDGS 1-17

BLDGS 24-35

BLDGS 18 & 19

EKAHI ASSOCIATION OFFICE 18-B

Ololani Drive

Wailea Akahi

S Kihei Road

To Kihei

BEACH

BLDGS 20-23

Public Right of Way

BEACH PAVILION

SWIMMING POOL

SWIMMING POOL

PADDLE TENNIS

SWIMMING POOL

SWIMMING POOL

SWIMMING POOL

ADDITIONAL INFORMATION CONCERNING RE-COATING PROJECT

During the Parking Lot and driveway re-coating project, we will be splitting all but one of these areas into 2 sections. thus, only about ½ of most areas will be re-coated at a time. This is being done to minimize the task of finding alternative parking areas for owners and guests. ½ of all driveways, that are associated with the parking spaces indicated below, will also be re-coated at the same time.

April 20th (Day 1): All south side, only, parking spaces nearest buildings 1 through 11
AND the east side, only, of the parking areas nearest buildings 12 through 17

April 21st (Day2): The north side, only, parking areas nearest buildings 1 through 11
AND the west side, only, of the parking areas nearest buildings 12 through 17

April 22nd (Day3): The north & west side, only, parking areas nearest buildings 47 through 54
AND the entire south end of the parking area near buildings 46 and 45

April 23rd (Day 4): The south & east side, only, parking areas nearest buildings 47 through 54
AND the entire north end of the parking area near buildings 46 and 45

April 24th (Day5): The north side parking areas nearest buildings 36 through 44
(including the entire parking area for buildings 37 and 38)
AND the entire parking area for buildings 34 and 35

April 27th (Day6): The south side, only, parking areas nearest buildings 36 through 44
AND all of the (Office) parking areas for Buildings 18 and 19

April 28th (Day7): The south side parking spaces nearest buildings 28 and 33
AND the east side parking spaces nearest buildings 24 and 33

April 29th (Day8): The other ½ of the parking spaces near buildings 24 through 35
(See day 7- above)
AND the east side, only, parking spaces for buildings 21 through 23

April 30th (Day9): All of the parking spaces for building 20
AND the west side, only, parking spaces for buildings 21 through 23

Painting of parking stripes will take place a week or so later and should only require the moving of a few cars that are parked where lines need to be painted. Our staff will be on hand to assist.

Please make sure that the office has keys to all parked cars.