

**WAILEA EKAHI
ASSOCIATION OF APARTMENT OWNERS
INDEX TO APARTMENT ALTERATIONS MANUAL
October 2004**

LANAI STORAGE CABINET

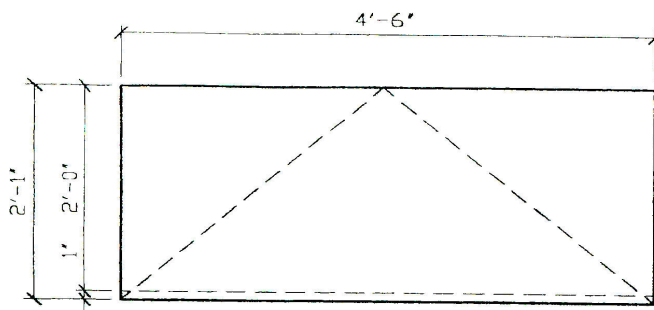
A. REQUIREMENTS:

1. Signed Application for Approval to alter Apartment
2. Building and Site Committee Approval

B. SPECIFICATIONS:

1. Design and specifications shall follow the details of the approved drawing dated, June 10, 2002, which is included in this manual.
2. Cabinet shall be of exterior grade plywood, without grooves.
3. Cabinet top may be hinged in lieu of doors at cabinet front.
4. Cabinet shall be painted Ekahi standard stucco color.
5. Hinges shall be hidden from view and door handles are at the option of the apartment Owner.
6. Cabinet should be located against a solid wall, but the Board of Directors reserves the right to approve the exact location of such cabinet.

C. DRAWING: (see next page)



1 TOP VIEW
 $\frac{3}{4}'' = 1'-0''$

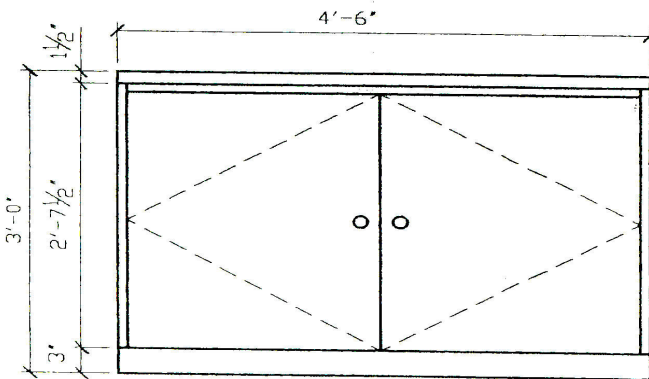
NOTES:

CABINETS MATERIAL SHALL BE PLYWOOD EXTERIOR GRADE SMOOTH SURFACE WITHOUT GROOVES.

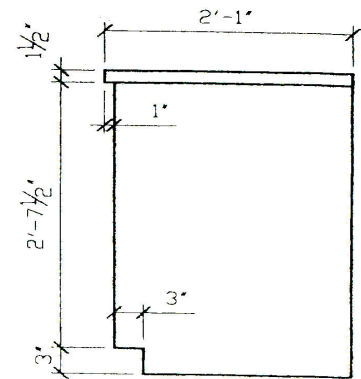
CABINET TOP MAY BE HINGED IN LIEU OF DOORS AT CABINET FRONT.

CABINETS SHALL BE PAINTED EKAHI STANDARD STUCCO COLOR.

HARDWARE HINGES SHALL BE HIDDEN FROM VIEW. DOOR HANDLES ARE AT THE OPTION OF APARTMENT OWNER.



2 FRONT VIEW
 $\frac{3}{4}'' = 1'-0''$



3 END VIEW
 $\frac{3}{4}'' = 1'-0''$

ASSOCIATION of APARTMENT OWNERS of WAILEA EKAHI

LANAI STORAGE CABINET

DRAWING: LSC - 1
 DATE: JUNE 10, 2002